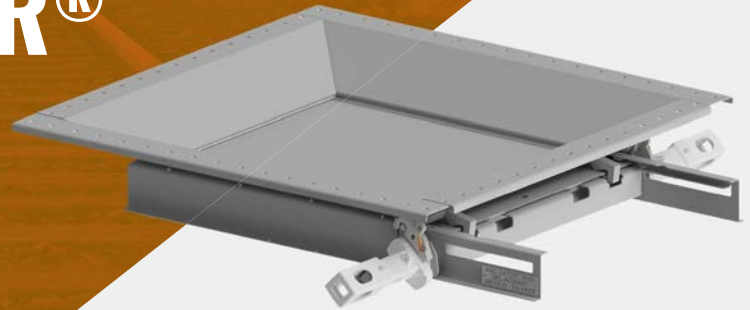


30" x 30" GATOR® OUTLET GATE



30" x 30" GATOR® OUTLET GATE
Part Number: 10019736



Hopper Car

The new GATOR® 30" x 30" hopper car outlet gate sharply improves the unloading of grain, fertilizer, corn, and other dry and light commodities.

FEATURES & BENEFITS

- Leak Proof - Reinforced Bolting Flange
- Low Operating Torque
- No Pinion Skipping
- Rolled Flange Construction
- Smooth, Continuous Hopper Surfaces
- Low Wear, High Strength Capstan
- Durable Automatic Lock
- Self-Cleaning
- Light Weight Construction
- Security Seal Tab

DEPENDABLE & EFFECTIVE

The Stucki GATOR® outlet gate features polyethylene door seals for ease of operation, an automatic locking door plate mechanism, and a self-cleaning door wiper.

THE FIRST OF ITS KIND

Perhaps most important is a new security mechanism engineered to deter door-plate theft, the first of its kind in the rail industry.





ADDITIONAL CUSTOMIZED OPTIONS

- Stainless Steel Hardware
- Available in 7 ga Steel
- Variety of Powder-Coated Options
- Food Grade Quality
- Heavy Duty Bolt-on Frame
- Standard 66 Bolt Pattern
- Weld-on Version

ADDITIONAL BENEFITS

- Lighter than currently available models without sacrificing strength
- High quality, flexible UHMW seals that are easy to replace
- Low torque operation for easy unloading and closing
- Efficient design to reinsert door to catch on gears (if door needs to be reassembled)
- Secure and strong locking mechanism that can be easily seen track-side to indicate that the door is locked
- Doors can be removed without removing operating shaft
- Cam system ensures that the locks do not drag on the gate door while opening and closing
- AAR S-233 approved outlet gate

TECHNICAL SPECIFICATIONS

Industry Size Reference	30" x 30"
Bolt-On Working Points	45-3/8" x 43-3/8"
Weld-On Working Points	45-3/8" x 43-3/8"
Actual Gate Opening Size	31-3/4" x 29-3/4"
Bottom Frame Opening	34-1/2" x 32-7/8"
Flange to Flange Height	9-3/4"
Overall Gate Height	10-3/4"
Number of Bolt Holes	66
Weight	345 lbs.
Centerline of Opening to Edge of Fully Open Door	53-13/16"

